

BRIDGING GAPS IN EARLY CHILDHOOD DEVELOPMENT

ANNUAL REPORT 2022

LET US CREATE FUTURES



អង្គការ រួមគ្នាដើម្បីអនាគត
LET US CREATE FUTURES

WHO WE ARE



A LITTLE BIT ABOUT OUR ORGANISATION

Let Us Create Futures is a Cambodian non-profit organization.

Our focus is bridging gaps in early childhood development for the marginalized children of the Preah Sihanouk Province. LUCF provides a safe space for learning and development to children below seven years old.

We provide nutrition and other health support, as well as complementary programs for women, children and other in need community members



OUR VISION

We believe in empowered mothers, youth and children who can live in peace as healthy and prosperous citizens.

OUR MISSION

Let Us Create Futures mission is bridging gaps in early childhood development while empowering women and youth in Cambodia.

ORGANIZATIONAL VALUES

We strive for impact. As a specialized organization, LUCF strives to perform and achieve well in all its programs and projects. Professionalism and excellence are expected from LUCF Board of Directors, staff, and volunteers. Ultimately, we want to impact the lives of children and their families and help give them a fighting chance for a better quality of life.

We are accountable to our stakeholders. LUCF takes ownership and responsibility of its programs and projects and their results. LUCF practices integrity and transparency in every aspect of operation, and practices accountability with internal and external stakeholders.

We are an inclusive organization. LUCF does not discriminate among marginalized groups. It will accept anybody as part of its staff and volunteers with no regard for gender, race, or different ability, as long as they are qualified for the position. Inclusivity is also practiced in its programs where the staff ensures that the marginalized in target communities are included in programs relevant them.

We are a learning organization. LUCF learns from its community, partners, donors and the larger social development sector. It nurtures a culture of learning and employs monitoring, evaluation, accountability, and learning to drive the continuous improvement of its programs and operations, to make them more relevant and impactful.





ORGANISATIONAL GOVERNANCE

Board of Directors

Sopheap Kong - Chairperson
Sophea Thuch - Secretary
Joseph Mahon - Member
Sovann Narak - Member
Alice Lunardelli - Member

Management Team

Sopheap Kong - Acting Executive Director
Donna Mackenzie- Program Support & Fundraiser



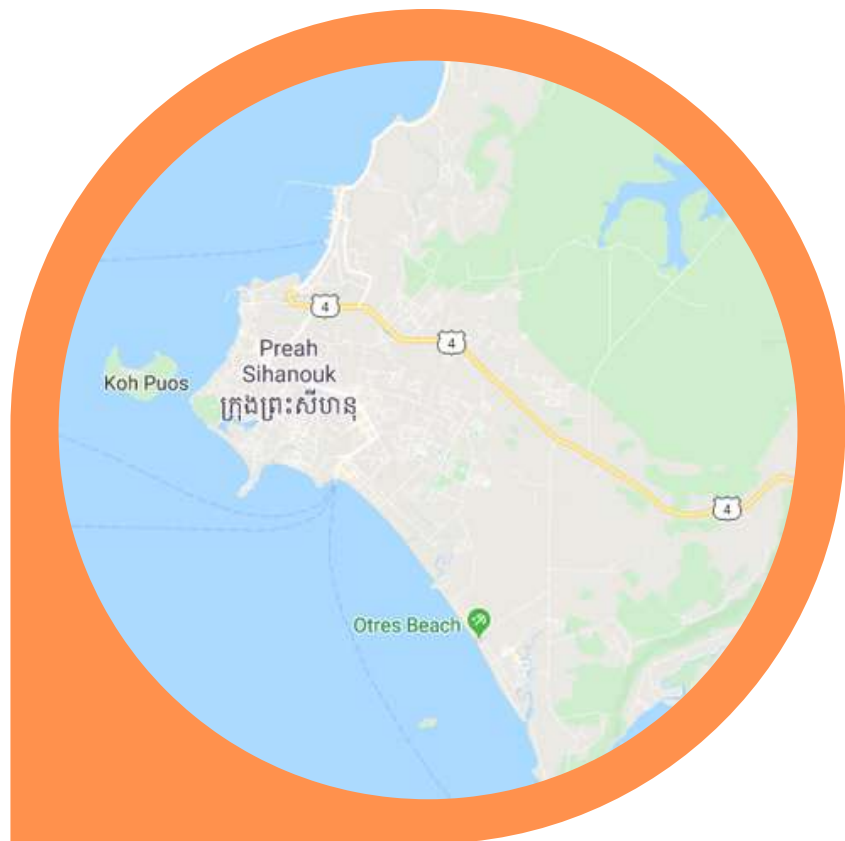


WHERE WE WORK

We work in the province of Sihanoukville, with our offices in Sangkat Boun

The major operation takes place in Klang Leu, where the Community Center and Preschool are located

We also support two home-based preschools in cooperation with the local commune, in the District of Prey Nup





OUR PROGRAMS

THROUGHOUT 2022 LUCF SUPPORTED OVER 350 COMMUNITY MEMBERS

NUTRITION SUPPORT

240 FAMILIES PROVIDED WITH NUTRITION SUPPORT PACKS

7750 HOT MEALS SERVED AT OUR PRESCHOOL

18250 SNACKS SERVED SUPPORT WITH PRESCHOOL AND HOMEBASED CARE FACILITIES

EARLY CHILDHOOD DEVELOPMENT

32 STUDENTS SUPPORTED TO GRADUATE TO GOVERNMENT SCHOOL

71 STUDENTS ATTENDING COMMUNITY PRESCHOOL & HOME BASE CARE FACILITIES

75 FAMILIES SUPPORTED WITH EARLY CHILDHOOD DEVELOPMENT SERVICE

MATERNAL SUPPORT

75 MOTHERS SUPPORTED WITH MATERNAL SERVICES

75 MOTHERS ATTENDING MOTHERS' GROUPS AND WORKSHOP

150 MOTHERS PROVIDED WITH EXTRA NUTRITION SUPPORT PACKS

COMMUNITY OUTREACH

5 FAMILIES SUPPORTED WITH EMERGENCY SUPPORT SERVICES

45 COMMUNITY MEMBERS ATTENDING WORKSHOPS

353 FAMILIES SUPPORTED WITH OUTREACH SERVICES



KLANG LEU COMMUNITY CENTRE



The LUCF Centre provides preschool and nutrition support five days a week for children aged 3 to 6 years old.

It is the hub of LUCF services in Klang Leu where we provide community empowerment programs and activities, which primarily focus on women and children.

We are developing our community garden which provides support for both our programs and support for the wider community with healthy sustainable food

**OUR EARLY CHILDHOOD
DEVELOPMENT PROGRAM
NURTURES STRONG STARTS
FOR SMALL PEOPLE.**



PREY NUP HOMEBASED CARE



We are working with strong group leaders in the community of Prey Nup to provide quality home-based daycare options for families with young children

Our aim is to provide sustainable outcomes and benefit early childhood development through the province.

Our support includes LUCF social outreach. ECD specialist advice and guidance, ongoing support to nurture the skills of care providers and resources

Throughout 2022 we have worked with two communities in the district to provide consistent child care and nutrition for students

Our further support has included food security for whole families, community workshops and health support including hepatitis screening



OUTREACH COMMUNITY SUPPORT

The LUCF outreach team are at the core of our services

Being able to connect with families and provide the support required for each family is only possible through their work

The aim of outreach support is to empower caregivers with a range of services that will improve the health and wellbeing of families with young children

COMMUNITY EVENTS AND SERVICES

105 COMMUNITY MEMBERS RECEIVED POSTURAL AND ORTHOPEDIC ASSESSMENT AND CONSULTATION

130 COMMUNITY MEMBERS PROVIDED WITH CLOTHING AND HOME MATERIALS

248 COMMUNITY MEMBERS PROVIDED WITH BLOOD TEST HEPATITIS B & C SCREENING

353 STUDENTS PROVIDED WITH EDUCATIONAL SUPPLIES



PARTNERSHIPS & COLLABORATIONS

WE SIGNED MEMORANDUMS OF UNDERSTANDING WITH THE FOLLOWING PARTNERS:

Provincial Department of Education

We work with the department to increase standardized early childhood education within the province

M'lop T'pang

M'lop T'pang generously provides medical support to the children currently enrolled in community day care and preschool



LUCF HAVE BEEN WORKING WITH SAFETIPIN, THE ASIA FOUNDATION IN CAMBODIA AND THE LOCAL AUTHORITIES OVER THE LAST THREE YEARS TO IMPROVE THE SAFETY OF THE CITY OF SIHANOUKVILLE

WE HAVE SUPPORTED DATA COLLECTION, AND INFORMATION SHARING.

ULTIMATELY THE FINDINGS WILL BE USED TO MAKE ENHANCEMENTS TO THE LANDSCAPE OF THE CITY, PARTICULARLY CONSIDERING THE WELFARE OF WOMEN AND CHILDREN



DONORS & SUPPORTERS

THANK YOU TO OUR SUPPORTERS IN 2022, WHO MADE DELIVERING OUR SERVICES POSSIBLE BY PROVIDING FUNDS FOR FOOD SECURITY, COMMUNITY HEALTH AND OTHER SERVICES



ឱសថស្ថាន ដី ឡា ហ្គារ
Pharmacie de la Gare



PROGETTO ARCA onlus
IL PRIMO AIUTO, SEMPRE



LET US CREATE FUTURES INTERNATIONAL

INTERNATIONAL SUPPORT FROM A TEAM OF DEDICATED FUNDRAISERS



LET US CREATE FUTURES INTERNATIONAL

Let Us Create Futures International, based in Australia has been developed thanks to the hard work of LUCF long term supporter and philanthropist,

The aim of LUCFI is to promote wellbeing of community in Cambodia and beyond

Thanks to the creation of the Charity and the work of the board promoting our work, vision and mission

LUCF is grateful to receive funds from international donors who have made a huge impact on being able to deliver our programs and services



FUNDRAISING EVENTS

WE HAD A LOT OF FUN THROUGHOUT 2022 WITH SOME GREAT EVENTS!

For choosing to support us with their activity, we would like to say thank you to:

The Vine Phnom Penh
Odom Farmers Market
CIA International School
The Giving Tree
Home of English

Along with those who generously supported the success of these events with their own donations and time, and to our private donors who held fundraisers on behalf of LUCF



We are grateful to receive the support of business', schools and other companies throughout the year with both money donations and program support materials.

All of which have directly benefitted families throughout the year

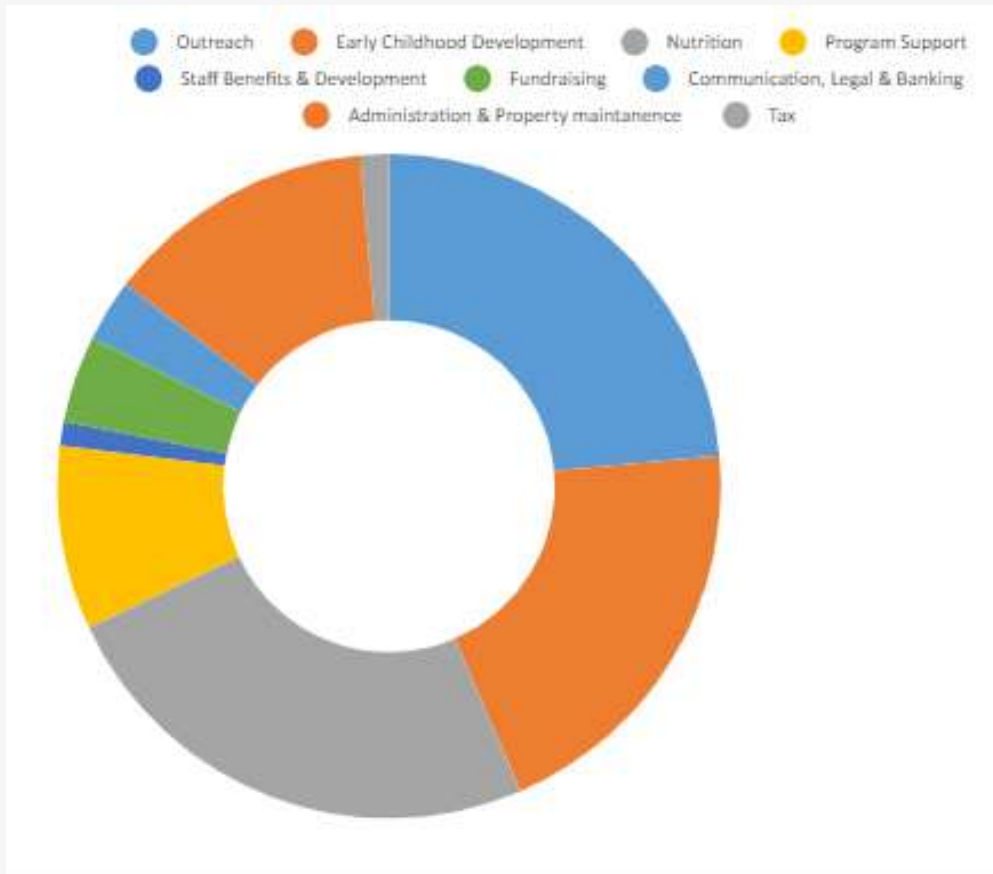


អង្គការ រួមគ្នាដើម្បីអនាគត
LET US CREATE FUTURES

2022 FINANCIALS

IN 2022, LUCF OPERATING EXPENSES WERE: \$56953.25

HOW WE USED THESE FUNDS:



Outreach 23.5%

Early Childhood Development 20%

Nutrition 24.5%

Program Support 9%

Staff Benefits & Development 1.2%

Fundraising 4.2%

Communication, Legal & Banking 3%

Administration & Property maintenance 13.2%

Tax 1.4%





FOR MORE INFORMATION

FOR MORE INFORMATION, CONTACT US

INFO@LETUSCREATEFUTURES.ORG
WWW.LETUSCREATEFUTURES.ORG

Follow us:

